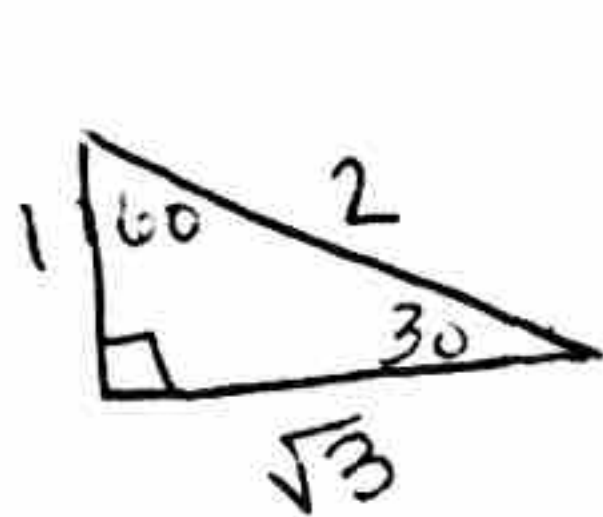


13.4 pg. 818 #3-29 odd, 35, 32-34



3.) $\frac{\pi}{2}, 90^\circ$

5.) $\frac{\pi}{2}, 90^\circ$, 7.) $\frac{\pi}{3}, 60^\circ$

9.) $-\frac{\pi}{6}, -30^\circ$

11.) C

13.) $\theta \approx 0.18, 10.4^\circ$ 15.) $\theta \approx 1.98, 113.6^\circ$

~~$190 \leq \theta \leq 270$~~

17.) $\theta \approx -0.2, -11.5^\circ$

19.) $\theta \approx 0.14, 8.1^\circ$

21.) $\sin^{-1}(0.45) \approx 26.7^\circ$
between

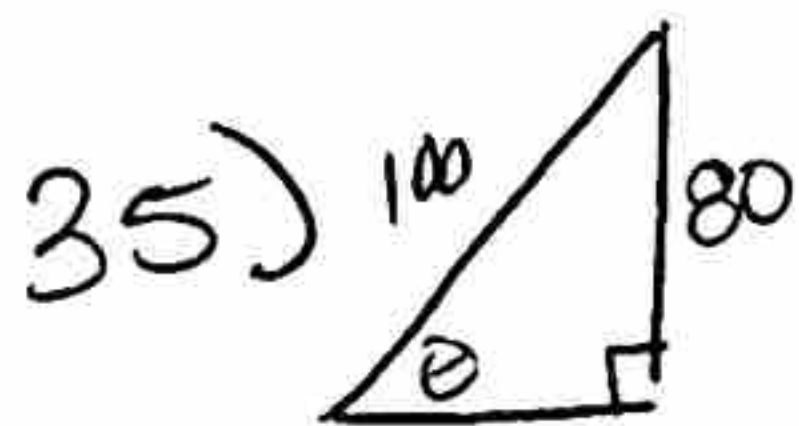
$\theta \approx 180 + 26.7 \approx \boxed{206.7^\circ}$

23.) $\tan^{-1}(3.2) \approx 72.6^\circ$
 $\theta \approx 180 + 72.6 \approx \boxed{252.6^\circ}$

25.) $\cos^{-1}(0.25) \approx 75.5^\circ$
 $360 - 75.5 = \boxed{284.5^\circ}$

27.) $\sin^{-1}(\frac{5}{8}) \approx 38.7^\circ$

29.) $\cos^{-1}(\frac{2\sqrt{3}}{4}) = 30^\circ$
 $\theta = 90 + 30 = \boxed{120^\circ}$



$\sin^{-1}(\frac{80}{100}) \approx \boxed{53.1^\circ}$

32.) $\frac{1}{\sin}(\sin x^{-1}) = x^{-1}$

33.) $\frac{1}{\tan}(\tan x^{-1}) = x^{-1}$

34.) $\frac{1}{\cos}(\cos x^{-1}) = x^{-1}$